



FR AMERICAS CHAMPIONSHIP STYLE GUIDE

V2 – SEPTEMBER 1, 2021

The following slides outline the specifications for all logo identification that each team and its drivers are required to follow during the 2021 FR Americas Championship season. The specifications include logo type, location, and size for the designated spaces. This document covers the Championship, partner, and sponsors logos for the season. Updates may be made via Competitor Advisory Memos during the season.

Teams should not produce official partner logos, series logos, or numbers for their cars. All teams will receive one (1) vehicle kit with their vehicle registration. This vehicle kit includes all required Championship and partner/sponsor logo decals, numbers, and number plates. Additional kits and individual assets will be available for purchase at each event.

Teams are allowed to wrap/paint their vehicles, but they are required to follow all usage guides provided by the Championship and partners/sponsors. All liveries require approval.

All drivers will receive one (1) suit kit with their driver registration. This suit kit includes all required Championship and partner/sponsor logo patches. Drivers are free to have their suits embroidered in lieu of these patches, but layouts require approval.

Car liveries, suit layouts, and any questions regarding logo placement, decals, patches or assets should be sent to Sydney Davis Yagel: syagel@sccapro.com.

[All assets and logo usage guides can be downloaded from the FR Americas Championship website.](#)

Some of our partners/sponsors have their own usage guides for their logos. For your reference, you can download them individually by clicking the links below, if applicable. [The full compliment of usage guides can be downloaded from the FR Americas Championship website.](#)

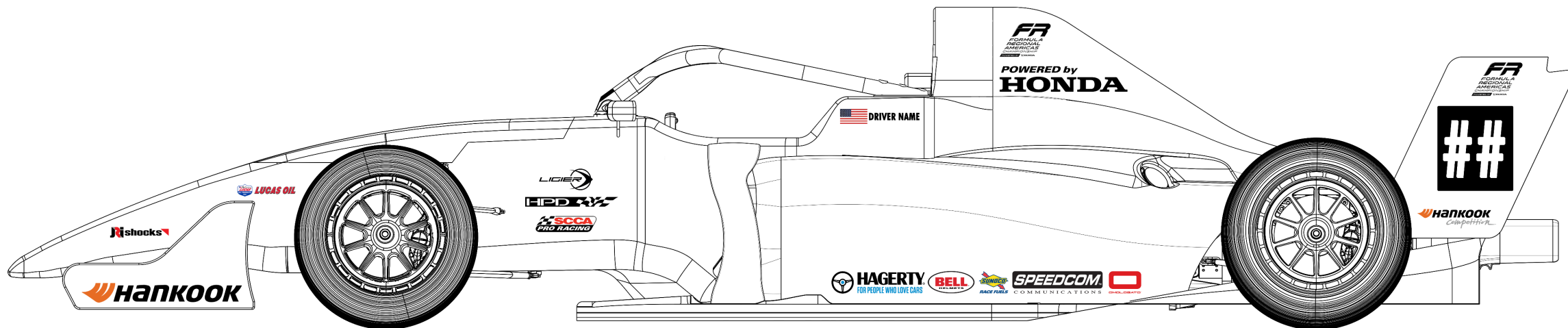
- [FR Americas Championship](#)
- [SCCA Pro Racing](#)
- [Hankook Tires](#)
- [Honda & HPD](#)
- Ligier
- [Lucas Oil](#)
- JRI Shocks
- Hagerty
- Speedcom
- Bell
- Omologato
- [Sunoco Race Fuels](#)

The following partner/sponsor logos are listed by location on the next couple of pages. For all logos, please provide a solid background for the area where the logo is to be placed unless prior approval has been received by Championship officials. Graphic layouts for decal placement on the cars will follow these charts. As a reminder, teams should not produce official partner logos, series logos, or numbers for their cars.

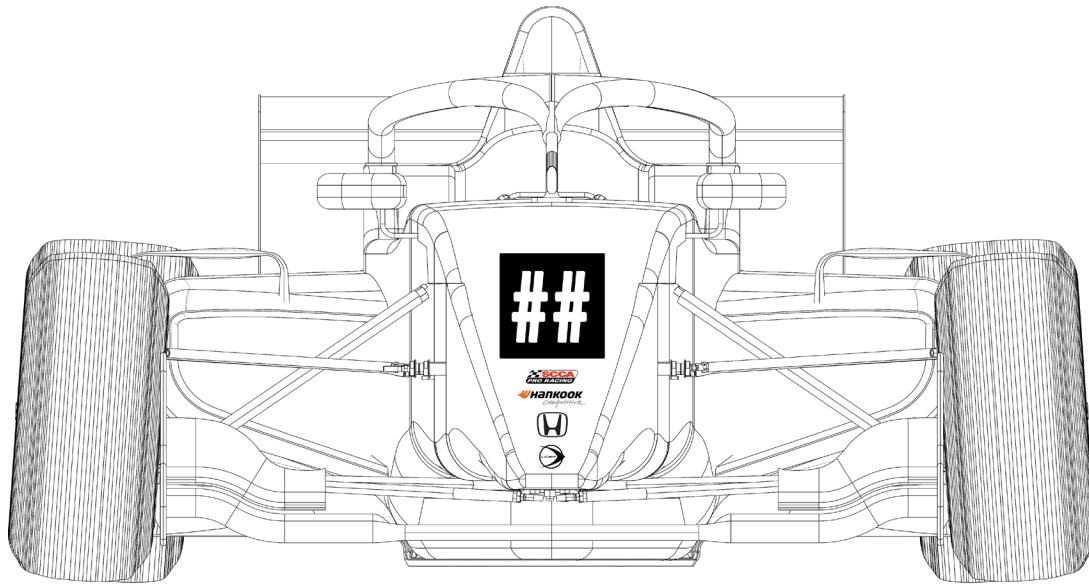
NOSE & FRONT CHASSIS	         
WINGS	  

The following partner/sponsor logos are listed by location on the next couple of pages. For all logos, please provide a solid background for the area where the logo is to be placed unless prior approval has been received by Championship officials. Graphic layouts for decal placement on the cars will follow these charts. As a reminder, teams should not produce official partner logos, series logos, or numbers for their cars.

<p>UPPER CHASSIS</p>	<div data-bbox="239 516 810 658">  HAGERTY FOR PEOPLE WHO LOVE CARS </div> <div data-bbox="845 516 1391 658">  </div> <div data-bbox="1431 516 1712 658">  </div> <div data-bbox="239 701 443 848">  </div> <div data-bbox="479 695 682 848">  </div>
<p>LOWER CHASSIS</p>	<div data-bbox="239 981 912 1215"> <p>POWERED by HONDA</p> <p><i>Provided Powered by Honda logos are black or white. Teams have the option to utilize red, but it must be (PMS 185).</i></p> </div> <div data-bbox="963 952 1294 1172">  </div> <div data-bbox="1352 1029 1939 1136"> <p>Additional space reserved for future title sponsor(s)</p> </div>



Front Wing	Front Chassis	Intake Cover		Engine Cover	Sidepod Ribbon	Rear Wing	
Long Hankook decal should be centered.	Top of decal sheet should be 7" down from the top of the chassis, centered on the halo.	Small FR logo should be 1" down from the top (profile, not curved over).	Powered by Honda should be 6.5" down from top (profile, not curved over). Leave a minimum isolation space of 2.5" from the base of the HONDA.	Leave 3" by 12" space for title sponsor.	All decals will be 2" tall. Bottom of decal should be 2" above the undertray. Group decals together in an organized fashion.	Large FR logo should be in alignment with the wing plane, positioned 1" below the top. Short Hankook logo should be positioned 1" above the bottom of the wing.	Number plate should be in contrast with the wing color, positioned 8" down from the top of the wing. Numbers will be in opposite color, centered on the plate.
Side Nose				Cockpit Side			
Logos should not be blocked by wheel or wing.				Home country flag to the left of name. Single color font without outline or shadow.			



Number & Number Plate

Number plate should be in contrast with the chassis color, positioned 3" down from the nose cone connection point. Numbers will be in opposite color, centered on the plate.

Sponsor Column

Top of decal sheet should be 10" down from the nose cone connection point.



Upper Left Chest



Championship Logo:
3" tall; width
proportionate to the logo
design

Upper Right Chest



Future Title Sponsor:
Leave 2"x4.5" space blank



SCCA Pro Logo:
2"x4.5"



Honda H Logo:
2.5" tall; there needs to be
at least half the height of
the logo surrounding the
combined H logo



Lucas Oil Logo:
2.5" tall

Upper Left Arm

All logos are 2" tall, width proportionate to the logo design; order top to bottom to be reflected as example to the right.



For dark suits, please use white logos in lieu of black logos featured here. All drivers will receive one (1) suit kit with their driver registration. This suit kit includes all required Championship and partner/sponsor logo patches. Drivers are free to have their suits embroidered in lieu of these patches, but layouts require approval. All drivers are required to wear a suit meeting proper branding standards when on the podium. Additional details are outlined in the Sporting Regulations.



**Drawing is not to scale*

Upper Left Chest



Championship Logo:
2.5" tall; width
proportionate to the logo
design

Upper Right Chest



Future Title Sponsor:
Leave 1.5"x3" space blank



SCCA Pro Logo:
1.5"x3"



Honda H Logo:
2.5" tall; there needs to be
at least half the height of
the logo surrounding the
combined H logo

Upper Left Arm

All logos are 1.5" tall, width proportionate to the logo design; order top to bottom to be reflected as example to the right.



For dark shirts, please use white logos in lieu of black logos featured here. All drivers are required to wear a driver shirt during official sessions (practice, qualifying, and races). This shirt can be worn in lieu of a suit at promotional events with the permission of Championship officials. Additional details are outlined in the Sporting Regulations.



**Drawing is not to scale*

Upper Left Chest



Championship Logo:
2.5" tall; width
proportionate to the logo
design

Upper Right Chest



Future Title Sponsor:
Leave 2"x4.5" space blank



SCCA Pro Logo:
2"x4.5"



HONDA

Honda H Logo:
2.5" tall; there needs to be
at least half the height of
the logo surrounding the
combined H logo

Upper Left Arm

All logos are 1.5" tall, width proportionate to the logo design; order top to bottom to be reflected as example to the right.



For dark shirts, please use white logos in lieu of black logos featured here. All crew members over the wall in the pits must be in an official crew shirt. Additional details are outlined in the Sporting Regulations.



**Drawing is not to scale*

Upper Left Chest



Championship Logos:
2" tall; width
proportionate to the logo
design; order top to
bottom to be reflected as
example to the right.

Upper Right Chest



Future Title Sponsor:
Leave 2"x4.5" space blank



SCCA Pro Logo:
2"x4.5"



Honda H Logo:
2.5" tall; there needs to be
at least half the height of
the logo surrounding the
combined H logo

Upper Left Arm

All logos are 1.5" tall, width proportionate to the logo design; order top to bottom to be reflected as example to the right.



For dark shirts, please use white logos in lieu of black logos featured here. All crew members over the wall in the pits must be in an official crew shirt. Additional details are outlined in the Sporting Regulations.



**Drawing is not to scale*

Upper Left Chest



Championship Logo:
2.5" tall; width
proportionate to the logo
design

Upper Right Chest



Future Title Sponsor:
Leave 2"x4.5" space blank



SCCA Pro Logo:
2"x4.5"



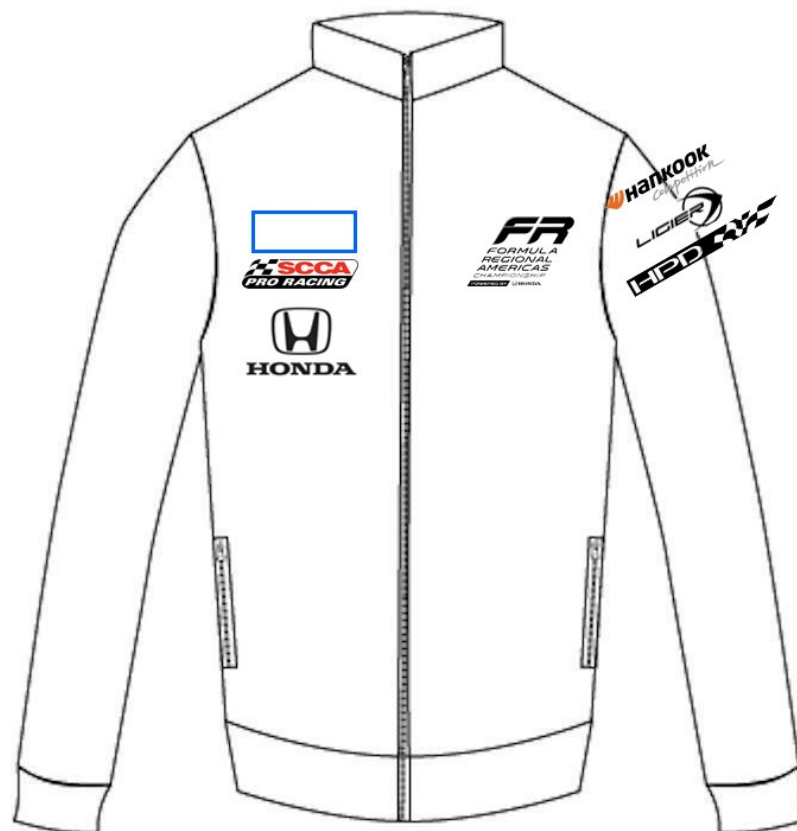
Honda H Logo:
2.5" tall; there needs to be
at least half the height of
the logo surrounding the
combined H logo

Upper Left Arm

All logos are 1.5" tall, width proportionate to the logo design; order top to bottom to be reflected as example to the right.



For dark shirts, please use white logos in lieu of black logos featured here. All crew members over the wall in the pits must be in an official crew shirt. Additional details are outlined in the Sporting Regulations.



**Drawing is not to scale*

Upper Left Chest



Championship Logos:
2" tall; width
proportionate to the logo
design; order top to
bottom to be reflected as
example to the right.



Upper Right Chest



Future Title Sponsor:
Leave 2"x4.5" space blank



SCCA Pro Logo:
2"x4.5"



HONDA

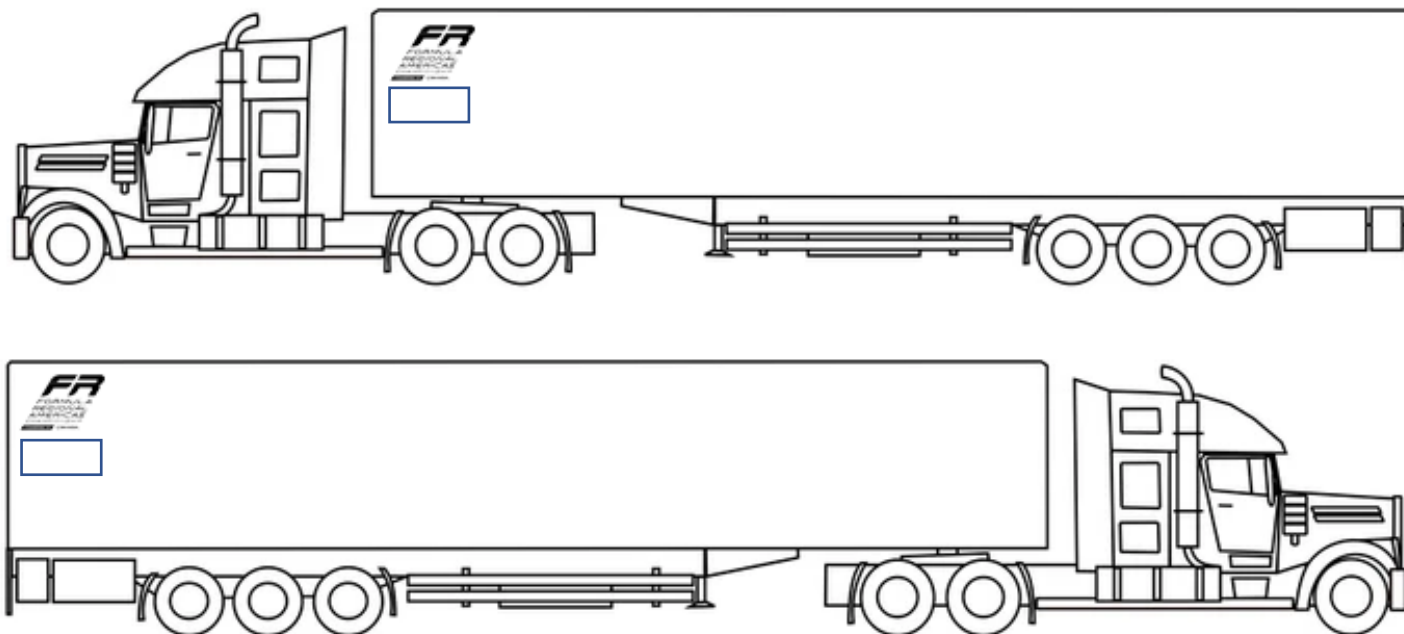
Honda H Logo:
2.5" tall; there needs to be
at least half the height of
the logo surrounding the
combined H logo

Upper Left Arm

All logos are 1.5" tall, width proportionate to the logo design; order top to bottom to be reflected as example to the right.



For dark shirts, please use white logos in lieu of black logos featured here. All crew members over the wall in the pits must be in an official crew shirt. Additional details are outlined in the Sporting Regulations.



**Drawing is not to scale*

Driver's Side

Championship Logo: 9' tall; width proportionate to the logo design



Future Title Sponsor: Leave 2'x4' space blank

Location of logos should be at the front of the trailer.

Passenger's Side

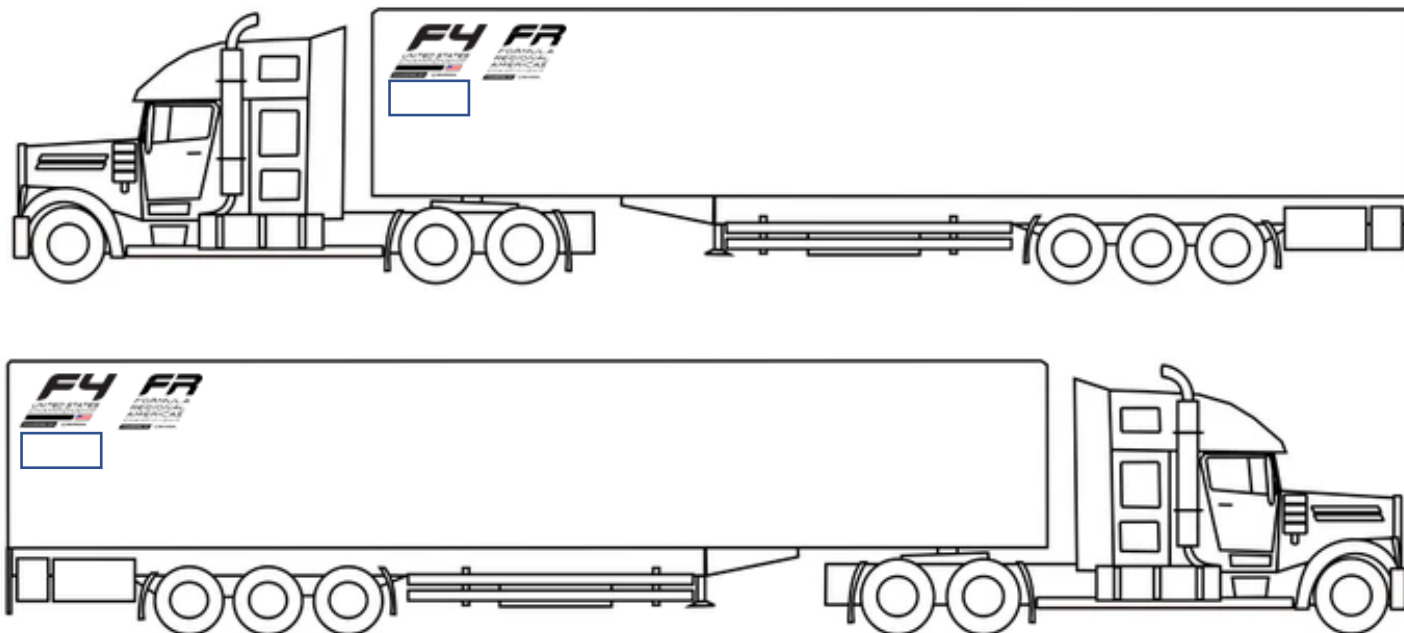
Championship Logo: 9' tall; width proportionate to the logo design



Future Title Sponsor: Leave 2'x4' space blank

Location of logos should be at the rear of the trailer.

These decals are not part of the decal kit provided with vehicle registration. Teams should make every effort possible to not feature conflicting logos with our primary sponsors/partners: Hankook, Honda/HPD, and Liger.



**Drawing is not to scale*

Driver's Side

Championship Logos: 9' tall; width proportionate to the logo design



Future Title Sponsor: Leave 2'x4' space blank

Location of logos should be at the front of the trailer.

Passenger's Side

Championship Logos: 9' tall; width proportionate to the logo design



Future Title Sponsor: Leave 2'x4' space blank

Location of logos should be at the rear of the trailer.

These decals are not part of the decal kit provided with vehicle registration. Teams should make every effort possible to not feature conflicting logos with our primary sponsors/partners: Hankook, Honda/HPD, and Liger.